

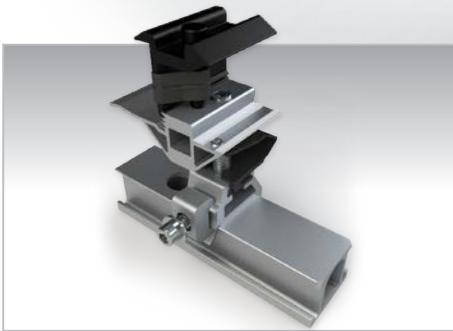
SFM INFINITY



Take your business to the next level with **SFM INFINITY**, UNIRAC's rail-less PV mounting system for flush mount installations on comp shingle and tile roofs. An advanced 3rd generation product platform in use by top solar contractors nationwide, **SFM INFINITY** optimizes your operations on and off the roof, with approximately 40% less labor, 30% logistics savings, and 20% fewer roof attachments than traditional solar racking. Plus, 87% of homeowners prefer **SFM INFINITY**'s aesthetics.

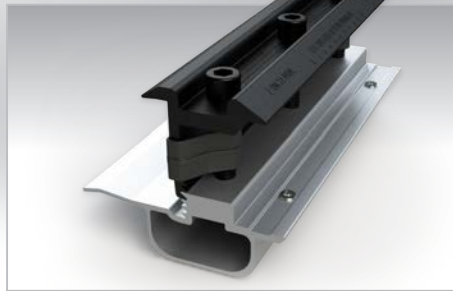


UNIVERSAL COMPONENTS
FIT 32 – 40MM MODULES



SUPERIOR PERFORMANCE

Enhance your business with two installs per day and 30% less cost.



EASY INSTALLATION

Pre-assembled components, 20% fewer roof attachments, and level array in seconds with post height adjustment.

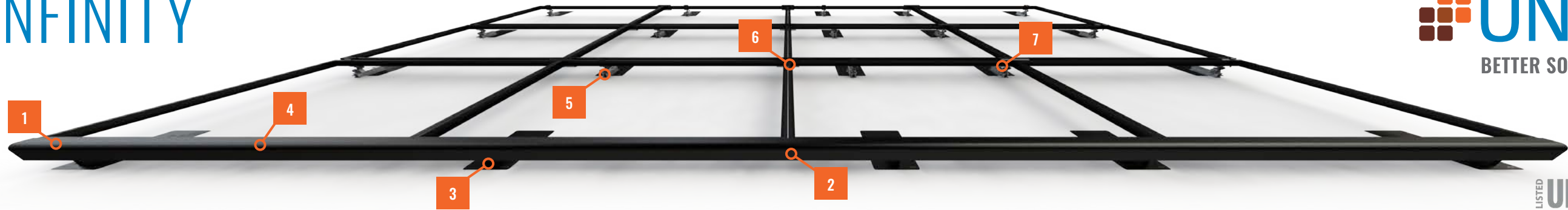


HOMEOWNER PREFERRED

More than 4 out of 5 homeowners prefer **SFM INFINITY**'s aesthetics over a leading rail brand.

REVOLUTIONIZING ROOFTOP SOLAR

FOR QUESTIONS OR CUSTOMER SERVICE VISIT UNIRAC.COM OR CALL (505) 248-2702



LISTED **UL2703** BONDING & GROUNDING
MECHANICAL LOADING
SYSTEM FIRE CLASSIFICATION



2 INSTALLS PER DAY

Make two installs per day your new standard. **SFM INFINITY** has fewer roof attachments, one tool installation, and pre-assembled components to get you off the roof 40% faster.

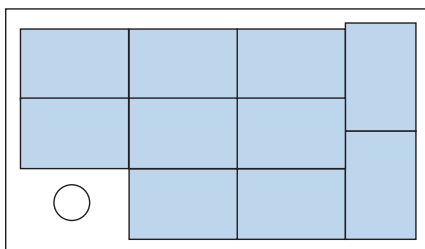
87% OF HOMEOWNERS PREFER

BETTER AESTHETICS








Install the system with the aesthetics preferred by homeowners, with integrated front trim, trim end caps, dark components, and recessed hardware.

MAXIMUM POWER DENSITY




Easily mix module orientations to achieve optimal power density without incurring the increased bill of materials, labor, and attachments required by rail.



SYSTEM OVERVIEW

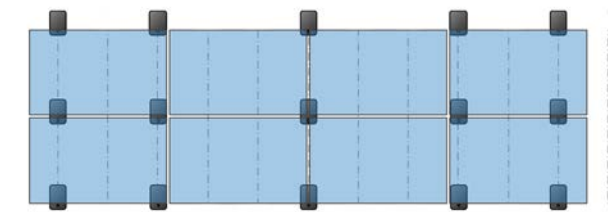
	PART NAME	DESCRIPTION
1	 TRIMRAIL	Structural front trim provides aesthetic and aligns modules.
2	 TRIMRAIL SPLICE	Connects and electrically bonds sections of TRIMRAIL.
3	 TRIMRAIL FLASHKIT	Attaches TRIMRAIL to roof. Available for comp shingle or tile.
4	 MODULE CLIPS	Secure modules to TRIMRAIL.
5	 MICRORAIL	Connects modules to SLIDERS. Provides post-install array leveling.
6	 SPLICE	Connects and supports modules. Provides east-west bonding. ATTACHED SPLICE also available.
7	 SLIDER FLASHKIT	Roof attachment and flashing. Available for comp shingle and tile.

BONDING AND ACCESSORIES

	PART NAME	DESCRIPTION
	 TRIMRAIL ENDCAPS	Covers ends of TRIMRAIL for refined aesthetic.
	 TRIMRAIL BONDING CLAMP	Electrically bonds TRIMRAIL and modules
	 N/S BONDING CLAMP	Electrically bonds rows of modules

20% FEWER ATTACHMENTS

Save time and money on every project: **SFM INFINITY** requires fewer attachments than rail systems.



SFM INFINITY 15 Attachments



RAIL 20 Attachments

30% LOGISTICS SAVINGS

With fewer SKUs and compact components, **SFM INFINITY** is easier to stock, easier to transport, and easier to lift to the roof. Plus, make more efficient use of your vehicle fleet.

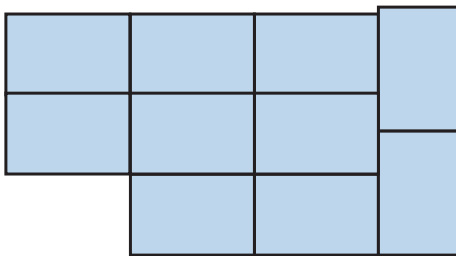
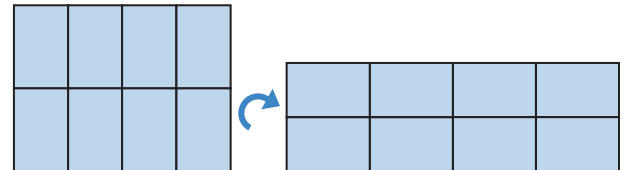


SFM INFINITY REVOLUTIONIZES ROOFTOP SOLAR WITH BENEFITS ACROSS YOUR BUSINESS, FROM DESIGN AND LOGISTICS, THROUGH ARRAY INSTALLATION AND SERVICE.

While you will see advantages simply from switching to **SFM INFINITY**, the following guidelines will help you to maximize its benefits.

DEFAULT TO LANDSCAPE

When possible, design in landscape orientation in order to fit more modules on the roof and minimize roof attachments.



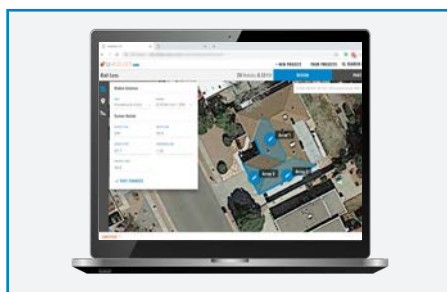
MIX MODULE ORIENTATIONS

SFM INFINITY is easily configured in mixed array shapes and module orientations to maximize array density and to avoid vent pipes and other obstacles. Because mounting locations are not constrained by rails, **SFM INFINITY** has unmatched flexibility to enhance your projects.

CONSULT THE QUICK TIPS VIDEOS

Visit UNIRAC's mobile-friendly library of short, topic-specific videos which answer common questions and demonstrate how simple it is to install **SFM INFINITY**.

Quick Tips Videos: <https://unirac.com/SFM-Infinity/>



DESIGN IN U-BUILDER

Layout your arrays in **U-Builder**, UNIRAC's free solar design software, to optimize **SFM INFINITY**'S capabilities, including mixing module orientations and minimizing roof attachments. Quickly create layouts on Google or Bing Maps and generate project documents.

U-Builder: <https://design.unirac.com/>

REVOLUTIONIZING ROOFTOP SOLAR

FOR QUESTIONS OR CUSTOMER SERVICE VISIT [UNIRAC.COM](https://unirac.com) OR CALL (505) 248-2702