

**SIEMENS**

*Ingenuity for life*



## Plug-On Neutral Load Centers and Electronic Breakers

Simple. Spacious. Secure.



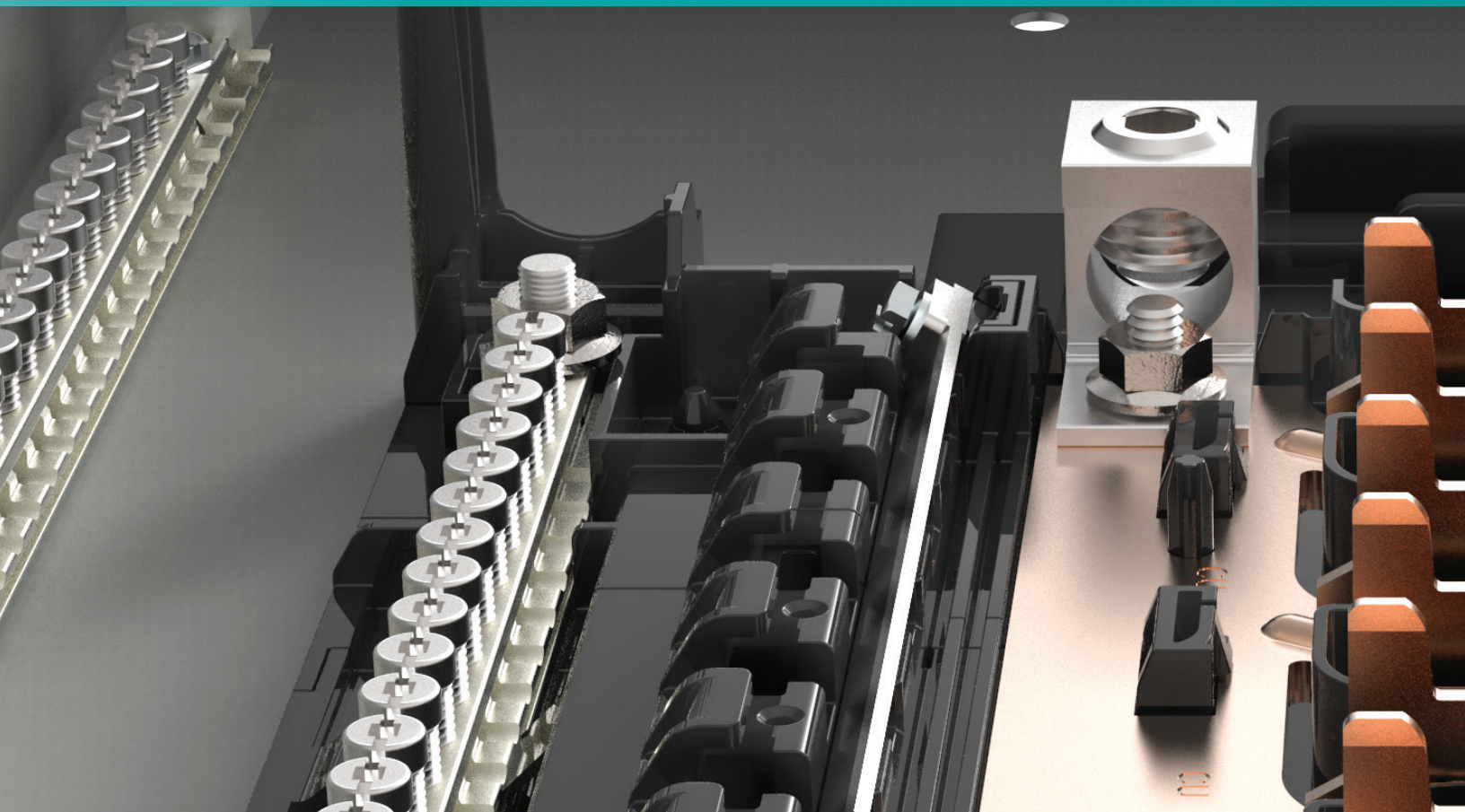
Installs just like any other circuit breaker.

Now without the pigtail.

No new wiring practice or installation  
method required.

[usa.siemens.com/loadcenters](http://usa.siemens.com/loadcenters)

You have come to know Siemens solutions for their durability, innovation, and safety attributes. This continues with the plug-on neutral load center with electronic breakers to provide a more secure connection resulting in a more confident installation.



# Simple

# Spacious

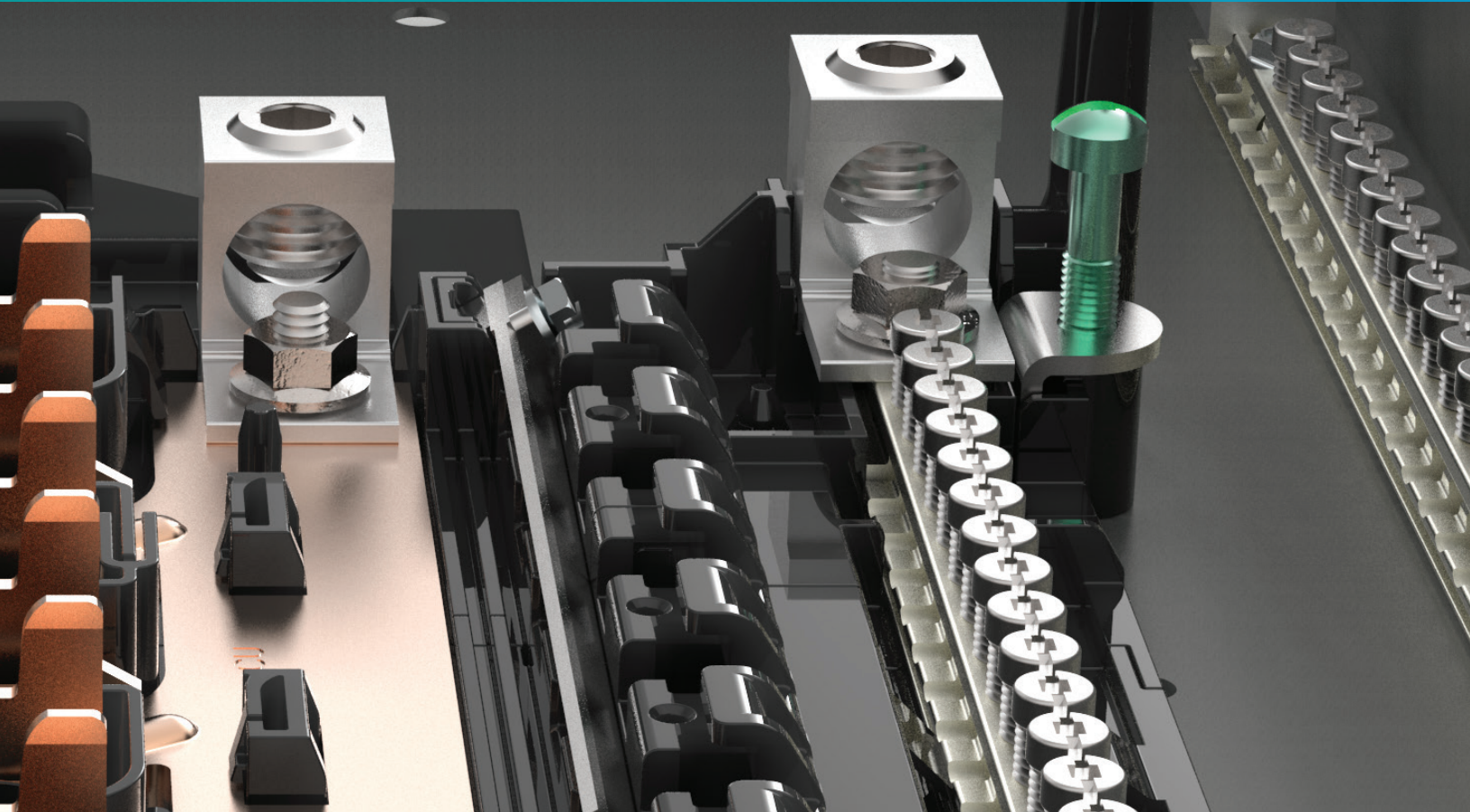
# Secure

- Quicker breaker installation
- Wiring made easier with the neutral lug removed on CAFCI breakers
- Same great features as PL and ES load centers
  
- Small electronic breaker footprint
- Design allows for neutral terminal accessibility
- Over 4 inches of wire bending space
  
- Same reliable installation method
- Neutral clip is the same as line side
- Durable hook-rail

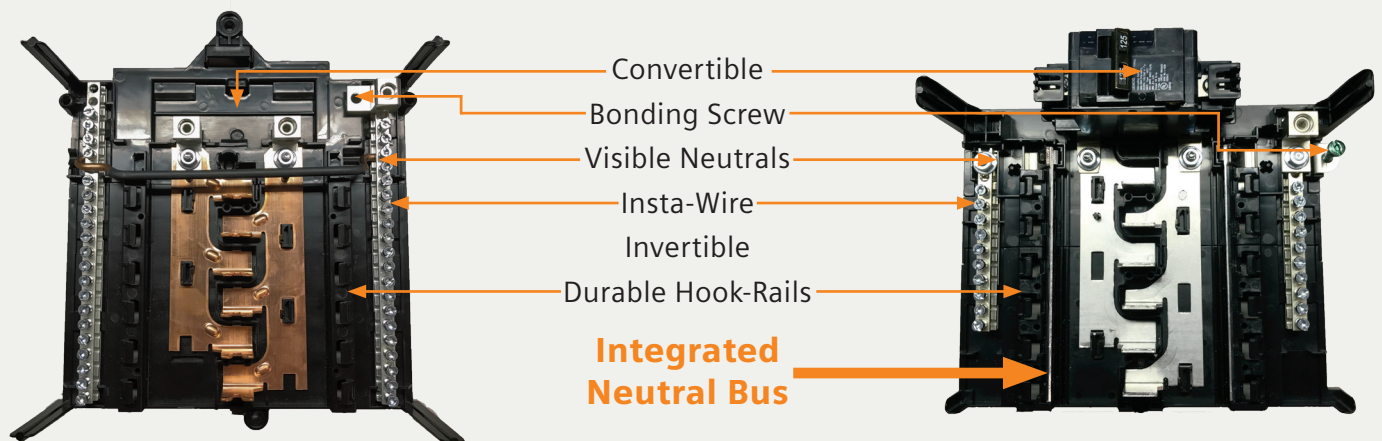
A Siemens Advantage



With an overall smaller electronic breaker footprint, the plug-on neutral load center still gives you over 4" of wire bending space, which allows for a simpler, cleaner, and faster path to a finished project.



The plug-on neutral load center has the same great features of the PL and ES line, plus an integrated neutral bus. ①



① PN panels are convertible and come with two ground bars. SN panels come with one ground bar.

## Plug-on neutral breaker offering:

- 1 and 2-pole CAFCI
- 1-pole Dual Function (CAFCI/GFCI)
- 1-pole GFCI

## Features:

- Load Lug(s) only on the CAFCI breakers
- LED indicators for troubleshooting
- Insta-Wire connectors

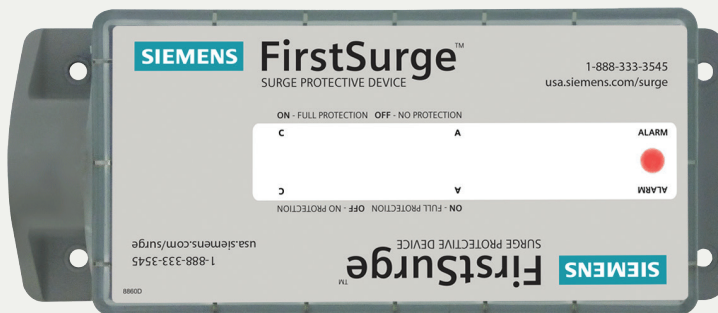
## Technical Data:

- 10,000 AIC
- 120V
- UL Listed
- HACR and SWD rated

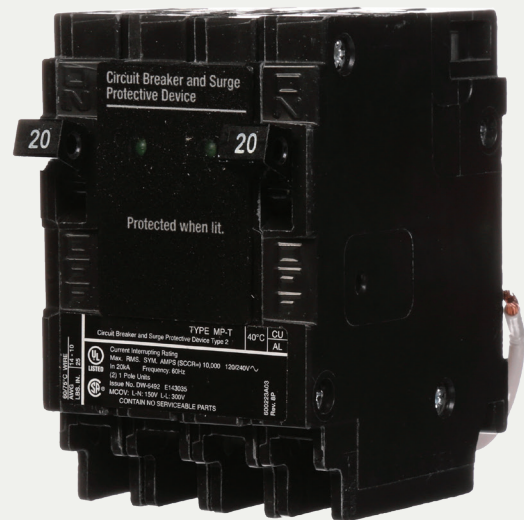
Combination Type AFCI	
1-pole	QA115AFCN
	QA120AFCN
2-pole	Q215AFCN
	Q220AFCN
Dual Function	
1-pole	Q115DFN
	Q120DFN
GFCI Class A 5mA	
1-pole	QF115AN
	QF120AN
	QF130AN

Note: Both plug-on neutral and existing pigtail breakers are listed for use in plug-on neutral load centers.

The new plug-on neutral load center is compatible with existing surge solutions including the QSA breaker and FirstSurge™ stand-alone units. Additionally, there are four panels offered with a factory-installed FirstSurge unit.



FirstSurge™  
Surge Protection Device



QSA Circuit Breaker and  
Surge Protection Device





CAFCI



Dual Function

CAFCI breakers now have a single lug only. The branch neutral conductor is returned to the neutral terminal bar. CAFCI breakers can be installed in the same manner as a thermal magnetic (standard) breaker. This allows the installer to land ground and neutral conductors before installing the breaker and power conductor.



Plug-on neutral breakers are designed using the existing line side clip to make the neutral connection. This clip is time tested and offers a secure connection.

# PN Series 1-phase Main Breaker/Convertible Plug-On Neutral Load Centers <sup>⑥</sup>

1-phase, 3-wire, 120/240 Volts AC

Main Breaker / Convertible Load Centers <sup>①</sup>  
100-225 Amperes

Copper Bus  
60/75°C Rated

Amp Rating	No. of Spaces	No. of Circuits	Indoor Enclosure - NEMA Type 1		Outdoor Enclosure - NEMA Type 3R	
			Catalog Number	Enclosure Height (inches) <sup>②</sup>	Catalog Number	Enclosure Height (inches) <sup>③</sup>
100	12	24	PN1224B1100C	18	PNW1224B1100C	21
100	16	32	PN1632B1100C	21	PNW1632B1100C	23
100	20	20	PN2020B1100C	21	PNW2020B1100C	27
100	20	40	PN2040B1100C	21	–	–
100	24	24	PN2424B1100C	24	–	–
100	30	30	PN3030B1100C	26	–	–
100	30	48	–	–	PNW3048B1100C	29
125	30	30	PN3030B1125C	26	–	–
125	30	48	–	–	PNW3048B1125C	29
150	8	16	–	–	PNW0816B1150TC <sup>⑤</sup>	23
150	20	40	PN2040B1150C	24	PNW2040B1150C	27
150	30	30	PN3030B1150C	30	–	–
150	30	48	–	–	PNW3048B1150C	35
200	8	16	–	–	PNW0816B1200TC <sup>⑤</sup>	23
200	20	40	PN2040B1200C	26	PNW2040B1200C	27
200	30	48	PN3048B1200 <sup>④</sup>	30	–	–
200	30	48	PN3048B1200C	30	PNW3048B1200C	35
200	40	40	PN4040B1200 <sup>④</sup>	36	–	–
200	40	40	PN4040B1200C	36	PNW4040B1200C	38
200	40	60	PN4060B1200 <sup>④</sup>	36	–	–
200	40	60	PN4060B1200C	36	–	–
200	54	82	PN5482B1200C	42	–	–
225	42	64	PN4264B1225C	39	PNW4264B1225C	38
225	54	82	PN5482B1225C	43	–	–

- ① Factory installed 22KAIC main breaker. Suitable for use as service equipment.
- ② Indoor enclosures are 14 1/4" wide by 3 7/8" deep.
- ③ Outdoor enclosures are 14 1/2" wide by 4 1/4" deep.
- ④ Includes all PN series features with aluminum bus.
- ⑤ Feed-thru lugs.
- ⑥ Available (made to order) in white by adding "W" to the end of the catalog number.

# PN Series 1-phase Main Lug/Convertible Plug-On Neutral Load Centers <sup>⑥</sup>

1-phase, 3-wire, 120/240 Volts AC

Main Lug / Convertible Load Centers <sup>③</sup>  
125-225 Amperes

Copper Bus  
60/75°C Rated

Amp Rating	No. of Spaces	No. of Circuits	Indoor Enclosure - NEMA Type 1		Outdoor Enclosure - NEMA Type 3R	
			Catalog Number	Enclosure Height (inches) <sup>①</sup>	Catalog Number	Enclosure Height (inches) <sup>②</sup>
125	12	12	PN1212L1125C	18	PNW1212L1125C	21
125	12	24	PN1224L1125C	18	PNW1224L1125C	21
125	16	32	PN1632L1125C	21	PNW1632L1125C	23
125	20	20	PN2020L1125C	21	–	–
125	20	40	PN2040L1125C	21	–	–
125	24	48	PN2448L1125C	24	–	–
125	30	48	PN3048L1125C	26	PNW3048L1125C	29
125	40	40	PN4040L1125C	36	–	–
150	20	40	PN2040L1150C	24	PNW2040L1150C	27
200	8	16	–	–	PNW0816L1200TC <sup>⑤</sup>	23
200	12	24	PN1224L1200C	21	PNW1224L1200C	23
200	20	40	PN2040L1200C	26	PNW2040L1200C	27
200	24	48	PN2448L1200C	30	–	–
200	30	30	PN3030L1200C	30	–	–
200	30	48	PN3048L1200 <sup>④</sup>	30	–	–
200	30	48	PN3048L1200C	30	PNW3048L1200C	35
200	40	40	PN4040L1200 <sup>④</sup>	36	–	–
200	40	40	PN4040L1200C	36	PNW4040L1200C	38
200	40	60	PN4060L1200C	36	–	–
225	12	24	–	–	PNW1224L1225C	27
225	42	64	PN4264L1225C	39	PNW4264L1225C	38
225	54	82	PN5482L1225C	43	–	–

<sup>①</sup> Indoor enclosures are 14 1/4" wide by 3 7/8" deep.

<sup>②</sup> Outdoor enclosures are 14 1/2" wide by 4 1/4" deep.

<sup>③</sup> 125A load centers will accept MBK100A and MBK125A. 150A load centers will accept MBK150A. 200A load centers will accept MBK200A and MBK150A. 225A load centers will accept MBK225A, MBK200A, MBK150A.

<sup>④</sup> Includes all PN series features with aluminum bus.

<sup>⑤</sup> Feed-thru lugs.

<sup>⑥</sup> Available (made to order) in white by adding "W" to the end of the catalog number.

# SN Series 1-phase Main Breaker Plug-On Neutral Load Centers <sup>⑤</sup>

1-phase, 3-wire, 120/240 Volts AC

Main Breaker Load Centers <sup>①</sup>  
100-225 Amperes

Aluminum Bus  
60/75°C Rated

Amp Rating	No. of Spaces	No. of Circuits	Indoor Enclosure - NEMA Type 1		Outdoor Enclosure - NEMA Type 3R	
			Catalog Number	Enclosure Height (inches) <sup>②</sup>	Catalog Number	Enclosure Height (inches) <sup>③</sup>
100	12	24	SN1224B1100	18	SNW1224B1100	21
100	16	32	SN1632B1100	21	SNW1632B1100	23
100	20	20	SN2020B1100	21	SNW2020B1100	27
100	20	40	SN2040B1100	21	–	–
100	24	48	SN2448B1100	24	–	–
100	30	30	SN3030B1100	26	–	–
100	30	48	SN3048B1100	26	–	–
125	12	24	–	–	SNW1224B1125	21
125	16	32	SN1632B1125	21	–	–
125	20	40	–	–	SNW2040B1125	27
125	24	24	SN2424B1125	24	SNW2424B1125	27
125	30	30	SN3030B1125	26	–	–
125	30	48	SN3048B1125	26	SNW3048B1125	29
150	16	32	SN1632B1150	24	–	–
150	20	40	SN2040B1150	24	SNW2040B1150	27
150	24	48	SN2448B1150	26	–	–
150	30	30	SN3030B1150	30	–	–
150	30	48	SN3048B1150	30	SNW3048B1150	35
200	40	40	–	–	SNW4040B1150	38
200	8	16	–	–	SNW0816B1200T <sup>④</sup>	23
200	12	24	–	–	SNW1224B1200	23
200	16	32	SN1632B1200	24	–	–
200	20	40	SN2040B1200	26	SNW2040B1200	27
200	24	48	SN2448B1200	30	–	–
200	30	48	SN3048B1200	30	SNW3048B1200	35
200	40	40	SN4040B1200	36	SNW4040B1200	38
200	40	60	SN4060B1200	36	–	–
200	42	64	SN4264B1200	39	–	–
200	54	82	SN5482B1200	42	–	–
225	42	64	SN4264B1225	39	SNW4264B1225	38
225	54	82	SN5482B1225	43	–	–

① Factory installed 22KAIC main breaker. Suitable for use as service equipment.

② Indoor enclosures are 14 1/4" wide by 3 7/8" deep.

③ Outdoor enclosures are 14 1/2" wide by 4 1/4" deep.

④ Feed-thru lugs.

⑤ Available (made to order) in white by adding "W" to the end of the catalog number.



# SN Series 1-phase Main Lug Plug-On Neutral Load Centers <sup>④</sup>

1-phase, 3-wire, 120/240 Volts AC

Main Lug Load Centers  
100-225 Amperes

Aluminum Bus  
60/75°C Rated

Amp Rating	No. of Spaces	No. of Circuits	Indoor Enclosure - NEMA Type 1		Outdoor Enclosure - NEMA Type 3R	
			Catalog Number	Enclosure Height (inches) <sup>①</sup>	Catalog Number	Enclosure Height (inches) <sup>②</sup>
125	12	12	SN1212L1125	18	SNW1212L1125	21
125	12	24	SN1224L1125	18	SNW1224L1125	21
125	16	32	SN1632L1125	21	SNW1632L1125	21
125	20	20	SN2020L1125	21	–	–
125	20	40	SN2040L1125	21	SNW2040L1125	23
125	24	24	SN2424L1125	24	SNW2424L1125	27
125	24	48	SN2448L1125	24	–	–
125	30	48	SN3048L1125	26	SNW3048L1125	29
125	40	40	SN4040L1125	30	–	–
150	16	32	SN1632L1150	21	–	–
150	20	40	SN2040L1150	24	SNW2040L1150	27
150	24	48	SN2448L1150	26	–	–
200	8	16	–	–	SNW0816L1200T <sup>③</sup>	23
200	12	24	SN1224L1200	21	SNW1224L1200	21
200	20	40	SN2040L1200	26	SNW2040L1200	27
200	24	48	SN2448L1200	26	–	–
200	30	30	SN3030L1200	30	–	–
200	30	48	SN3048L1200	30	SNW3048L1200	29
200	40	40	SN4040L1200	36	SNW4040L1200	35
225	12	24	–	–	SNW1224L1225	21
225	40	60	SN4060L1225	36	–	–
225	42	64	SN4264L1225	36	SNW4264L1225	38
225	54	82	SN5482L1225	42	–	–

<sup>①</sup> Indoor enclosures are 14 1/4" wide by 3 7/8" deep.

<sup>②</sup> Outdoor enclosures are 14 1/2" wide by 4 1/4" deep.

<sup>③</sup> Feed-thru lugs.

<sup>④</sup> Available (made to order) in white by adding "W" to the end of the catalog number.

# Specialty Main Lug and Main Breaker Plug-On Neutral Load Centers

1-phase, 3-wire, 120/240 Volts AC

## Factory Installed FirstSurge Load Centers

Amp Rating	No. of Spaces	No. of Circuits	Indoor Enclosure - NEMA Type 1		Surge Protection
			Catalog Number	Enclosure Height (inches)	
200	30	48	PN3048B1200S14	36	140kA
200	40	60	PN4060B1200S14	42	140kA
200	30	48	SN3048B1200S06	36	60kA
200	40	60	SN4060B1200S06	42	60kA

## 500 Kcmil Lug Load Center

Amp Rating	No. of Spaces	No. of Circuits	Indoor Enclosure - NEMA Type 1	
			Catalog Number	Enclosure Height (inches)
200	30	48	SN3048L1200L50	36

## Selectable Main Load Centers

Amp Rating	No. of Spaces	No. of Circuits	Indoor Enclosure - NEMA Type 1		Outdoor Enclosure - NEMA Type 3R	
			Catalog Number	Enclosure Height (inches)	Catalog Number	Enclosure Height (inches)
125	24	24	SN2424C1125	24	SNW2424C1125	27
200	20	40	SN2040C1200	26	SNW2040C1200	27
200	30	48	SN3048C1200	30	SNW3048C1200	35
200	40	40	SN4040C1200	36	SNW4040C1200	38





**Published by  
Siemens 2020**

Siemens Industry, Inc.  
5400 Triangle Parkway  
Norcross, GA 30092

Siemens Technical Support: 1-800-333-7421  
info.us@siemens.com

Printed in USA-CP  
Order No. RPBR-PLUGO-0320  
All Rights Reserved  
© 2020, Siemens Industry, Inc.  
[usa.siemens.com/loadcenters](http://usa.siemens.com/loadcenters)

The technical data presented in this document is based on an actual case or on as-designed parameters, and therefore should not be relied upon for any specific application and does not constitute a performance guarantee for any projects. Actual results are dependent on variable conditions. Accordingly, Siemens does not make representations, warranties, or assurances as to the accuracy, currency or completeness of the content contained herein. If requested, we will provide specific technical data or specifications with respect to any customer's particular applications. Our company is constantly involved in engineering and development. For that reason, we reserve the right to modify, at any time, the technology and product specifications contained herein.